

Soft Offer R50-R65

COMMODITY: Used Rails (R50-R65)

ORIGIN: Romania, Russia

QUANTITY: Min.30,000 MT/month x12

PACKING: Loose/Bulk

PRICE: CIP \$285/MT ASWP

INSPECTIONS: SGS,CIQ,CCIC at seller's expense; buyer's expense if required at unloading port

SPECIFICATIONS:

USED RAILS

Cut to 1.2 meter lengths (standard) – other lengths available upon request. Cutting fee of \$15 applies to size less than 1.0m(0.8m-1.0m). Scrap/Railroad Ferrous Scrap (R50-R65) chemical composition shall be according to:

R50	GOST 7173-75 weight 51.67 kg/meter
R65	GOST 8165-75 weight 64.72 kg/meter
C	=0.54 - 0.82%
Si	=0.18 - 0.40%
Mn	=0.60 - 1.05%
S	=0.04% MAX
P	=0.035% MAX
As	=0.01% MAX OF MASS SHARE

HMS1/2

Scrap Consists out of a mix of mill scrap (stampings, cuttings, bars, etc.), industrial scrap (nuts, bolts, misc. pieces, etc.), auto and truck frames and bodies, railroad scrap (wheels, axles, parts of locomotives and carriages, etc.), ship scrap (fittings, plate pieces, parts), construction scrap (plate, bars, angle pieces, rods, steel pipe, etc.), and miscellaneous commercial scrap (appliance casings, frames and parts, etc.). Non-metal impurities total of 1% (one percent) or less. All goods sold by the seller will also be totally free from any types of radiation, bombs, arms and ammunition, mines, shell, cartridges, sealed containers, gas cylinders, explosive shells or explosive materials in any form either used or otherwise as per the specification below:

HMS 1 – ISRI CODE 200: HEAVY MELTING STEEL. WROUGHT IRON AND/OR STEEL SCRAP 1/4 INCH OR STEEL SCRAP 1/4 INCH AND OVER IN THICKNESS. INDIVIDUAL PIECES NOT OVER 60 X 24 INCHES (CHARGING BOX SIZE) PREPARED IN A MANNER TO INSURE COMPACT CHARGING.

HMS 1 – ISRI CODE 201: HEAVY MELTING STEEL 3 FEET X 18 INCHES. WROUGHT IRON AND/OR STEEL SCRAP 1/4 INCH OVER IN THICKNESS. INDIVIDUAL PIECES NOT OVER 36 X 18 INCHES (CHARGING BOX SIZE) PREPARED IN A MANNER TO INSURE COMPACT CHARGING.

HMS 1 – ISRI CODE 202: HEAVY MELTING STEEL 5 FEET X 18 INCHES. WROUGHT IRON AND/OR STEEL SCRAP 1/4 INCH OVER IN THICKNESS. INDIVIDUAL PIECES NOT OVER 60 X 18 INCHES (CHARGING BOX SIZE) PREPARED IN A MANNER TO INSURE COMPACT CHARGING.

HMS 2 – ISRI CODE 203: HEAVY MELTING STEEL WROUGHT IRON AND/OR STEEL SCRAP, BLACK AND GALVANIZED, 1/8 INCH AND OVER IN THICKNESS, CHARGING BOX SIZE TO INCLUDE MATERIAL NOT SUITABLE AS NO.1 HEAVY MELTING STEEL PREPARED IN A MANNER TO INSURE COMPACT CHARGING.

HMS 2 – ISRI CODE 204: SAME AS ISRI 203 BUT MAX SIZE 36 X 18 INCHES.

HMS 2 – ISRI CODE 205: SAME AS ISRI 204 BUT FREE OF SHEET IRON OR THIN – GAUGED MATERIAL.

HMS 2 – ISRI CODE 206: SAME AS ISRI 204 BUT MAX SIZE 60 X 18 INCHES.

TERMS AND PROCEDURES

All orders must be accompanied by a completed Letter of Intent (LOI) template

We offer three contract types:

- A. Annual Contract
- B. Spot Contract
- C. Revolving Spot Contract (revolving Spots with price locked in for term)

With the following payment terms

- 1) 100% Letter of Credit (payable on demand against Signed Commercial Invoice, SGS[Q,Q, non-radiation], Packing Slip and Ocean Bill of Lading) with a one-time LC processing fee of 2% of the first month's LC value with 5 days of contract signing. The seller does not use an advising bank. PB is 2 % of monthly shipping value, corporate PB until LC verifies, then is replaced with a bank bond of the PB.
- 2) 100% Letter of Credit via J.P. Morgan Chase Bank. The buyer agrees to establish an account at J.P. Morgan Chase Bank, N.A. to fund the letter of credit as per contract by working with the Executive Director at J.P. Morgan Chase Bank, Manhattan, New York – yes 2% PB.
- 3) URC522 Documentary Collection Bank to Bank exchange. ** ICC Uniform Rules for Collection – ICC Publication 522.

Note:- Clients can choose to make due through our disbursing attorney at Law Trust (ESCROW) Account – IOLTA account. The Law Firm registered as Money Services Business (MSB) with U.S. Department of Treasury's Financial Crimes Enforcement Network (FinCEN), and regulated under the Internal Revenue Service (IRS), compliance under the Bank Secrecy Act, the Federal Bureau of Investigation (FBI) and the Department of Homeland Security (DHS).

FREQUENTLY ASKED QUESTIONS:

- Will the seller provide proof of past performance?

Proof of past performance has nothing to do with proof of future performance and will not be provided. In addition, it also violates the client confidentiality agreement within each contract.

- What is a 100% Corporate Performance Bond Guarantee?

The 100% Corporate Performance Bond Guarantee is in essence the same as issuance of a Stock Certificate or Municipal Bond covering any deposit or payment received and is fully collectible in the event of contract breach by the seller as it is contained within the contract. The 100% Corporate Performance Bond Guarantee also applies to and is issued for all Spot Contracts and Revolving Spot Contracts and is initiated immediately upon signing/countersignature of contract for receipt of any payments or deposits as per Appendix 5 of the issued contract. Seller issues a 100% Corporate Performance Bond Guarantee on all contracts for funds received as deposit for Annual Contracts or payment made for Spot

Contracts and Revolving Spot Contracts. Furthermore, Bank PB or SBLC of 100% is issued by seller on Annual Contracts once the LC has been received and verified to match the terms within the contract.

- Is seller in possession of AQSIQ Registration?

Yes, seller is registered with AQSIQ as "Manufacturer/Yard". "Manufacturer/Yard" registration with AQSIQ is withheld and presented only to the port authority for entry (if buyer does not have their own AQSIQ Registration) and is not given out beforehand so as not to be duplicated, unlike "Broker" registration which is given for verification as the AQSIQ website.

PROOF OF PRODUCT TERMS

Seller shall provide proof of product by means of an on-side inspection of material sold under any of its contracts provided that:

- A) The buyer has made their deposit in clean and clear funds into the account of seller designated by any of its properly countersigned contracts along with its term Letter of Credit, and;
- B) The buyer provides copies of all attending parties' passports with in 72 hours from signature of contract, and;
- C) The country if loading permits such visitation of each party whose passports has been submitted with the express understanding that seller shall not be held liable under any circumstances as a result from any constraint, delay, condition or rejection, and;
- D) The buyer shall pay for any and all costs incurred for such on-site inspection no matter its origin to be paid immediately upon presentation of invoice, and;
- E) Should the buyer reject any material offered by seller, then seller reserves the right to show additional material from any other site it deems appropriate until such time as the material is deemed acceptable by the buyer, but limited to a maximum of the sites currently available to seller without incurring breach therein of any contract entered into between the buyer and seller.
- F) The buyer may withhold any proof of product and on-site inspection during the term of any contract, but such inspection shall be exercised only one time during the course of any contract without express written agreement by both parties.
- G) These terms shall not be applicable for any contract defined as a Spot Contract or contract lasting in duration for less than three (3) calendar months.

H) Should the buyer demand SGS as Proof of Product, buyer shall place USD 6.00/MTW of their total planned order into seller's account upon the request to pay for such inspection, and such report will be send directly the buyer upon its completion by SGS.

ADDITIONAL NOTES:

- The procedures listed on pages 2 and 3 are for the following materials only: -R50-R65 (used rails) cut 1.5m or 1.2m –ISRI 200-206 (HMS1&2) Materials listed on page 9-10 or rail other than 1.5m or 1.2m lengths are considered as “special order” and require pre-payment before loading.
- Seller has many other forms of scrap metal available (see pages 9-10)... simply provide us with ISRI code and quantity needed and we will confirm available and pricing.
- All orders must be in multiples of 30,000 MT (30k, 60k, 90k, 120k, etc.)
- Used Rails are standard cut to 1.5m meter length and pallet bundled at 2,000-2,500 lbs. per bundle but can be cut to any length or purchased uncut. Uncut rails can be bundled up to 2,500 MT per bundle (depending on unloading capability at receiving port).
- SGS Report is not to be considered as “condition of payment” or “proof of product” with any transaction. Buyer will receive full SGS report directly from SGS upon loading of cargo. If buyer is purchasing a Spot already loaded, SGS cannot send a verifiable report direct without a fresh inspection specifically for the buyer. We cannot and will not release an un-sanitized SGS from loading as that would violate the SGS Report on board the vessel as per SGS policy. The SGS Report on board the vessel is valid for port entry under the seller's name, however, if buyer wishes for SGS issued under their name for shipment already on board it must be paid for in advance at a rate of USD \$6.00/MT.
- Broker circumvention is NOT tolerated in any way by seller. If seller receives direct communication from a broker or potential buyer, seller will not process with negotiations and /or contract issuance until all referring parties are properly identified for the purpose and recognition of intermediary commissions.
- Seller will negotiate new terms of sale after signing of contract and performance by the mines. Seller uses private shipping and has extremely high security methods deployed (especially given recent events of hijackings) therefore any demands for Q88, ship registry documents, etc. will not be provided for long term business development, but seller also cannot satisfy buyer paranoia at the expense of the lives of the crews on-board the shipping vessels. These things will not resolve buyer issue and our experience has shown that clients who continuously want “something more” before

payment end up wanting more and more yet never pay for their goods.

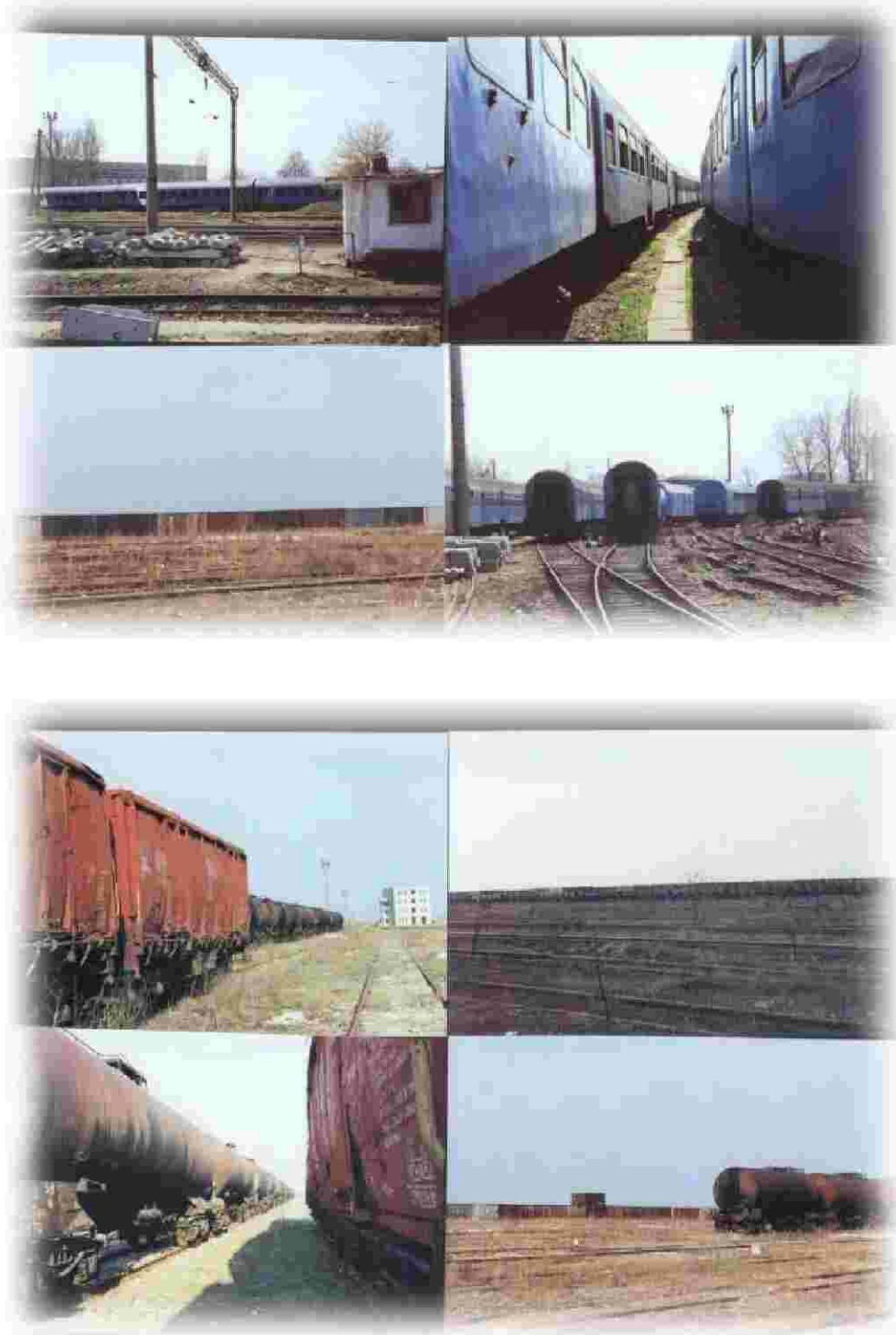
Rail





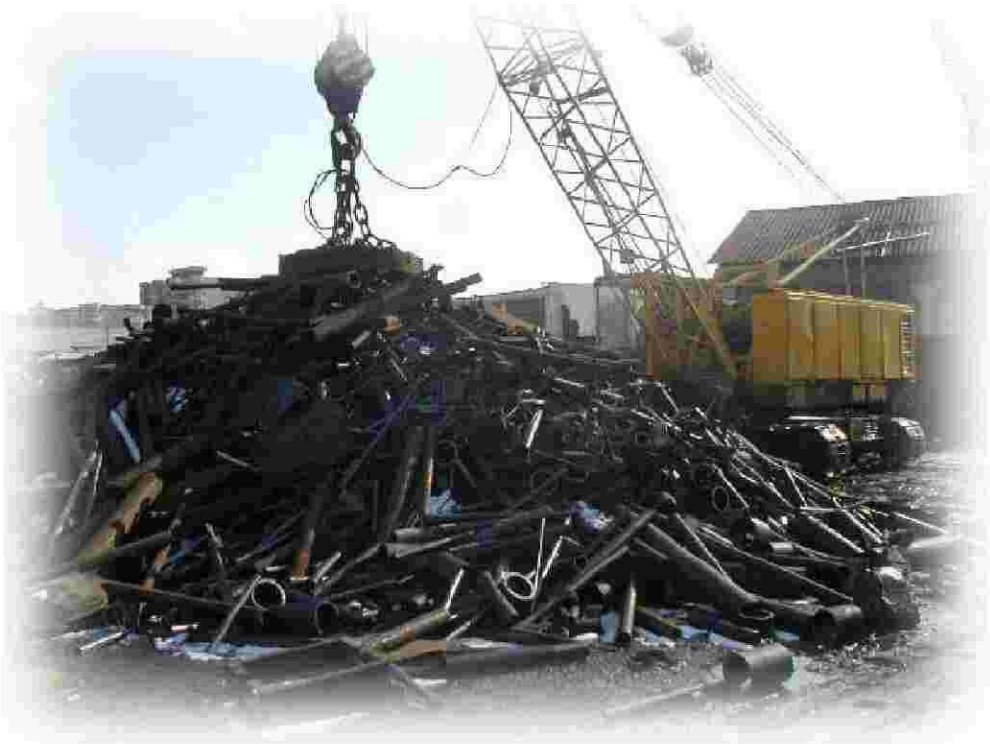


Rail & HMS



HMS 1/2







Other Scrap Metal Types





